

LiNA McCartney Tube™

Colpotomy Tube

Transvaginal tube without uterine manipulation for
total laparoscopic hysterectomy



Innovation in Gynecology

LiNA McCartney Tube™

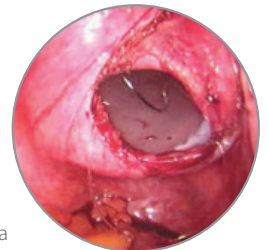
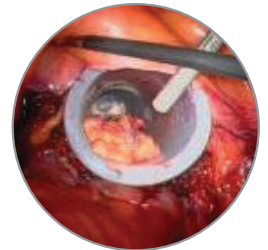
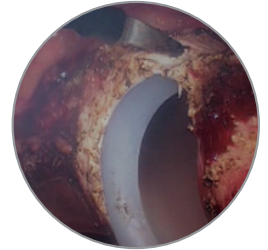
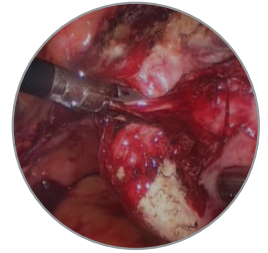
Colpotomy Tube

Safety. Improved visualization for a safer procedure.^{1,6}

Identifies where to safely seal and divide the uterine vessels.^{1,2,6,8}

Clear template for bladder dissection and colpotomy.^{1,3,5,6}

The device provides protection of the ureters from trauma during surgery. Assists in keeping the ureters in sight and out of the operative field.^{5,1}



Ease of use. Convenient conduit for needle, suture and specimen.

The silicone tube tamponades the vaginal vault and ensures maintenance of pneumoperitoneum.^{2,4,6}

Provides an easy exit for specimen.^{2,4,6,7}

Offers the ability of laparoscopic suturing of the vaginal vault. Delivers convenient entry and exit for needle and suture and presents the vaginal edges for laparoscopic closure.^{6,7,1}

Versatility. Adapting to your surgical needs.

Lid with 5 mm and 10 mm valves. Prevents loss of pneumoperitoneum and enables insertion of instruments.^{2,4,6,7}

Soft curvature design available in two sizes for atraumatic insertion and anatomic fit.

Single use design, sterile and ready to use.

References:

1. Elkington et al. Total laparoscopic hysterectomy: A tried and tested technique. *Journal of Minimally Invasive Gynecology* (2005) 12, 267-274.
2. Janda et al. Quality of life after total laparoscopic hysterectomy versus total abdominal hysterectomy for stage I endometrial cancer (LACE): a randomised trial. *Lancet Oncol* 2010; 11: 772-80.
3. Lee et al. Total Laparoscopic Radical Hysterectomy Using Lee-Huang Portal and McCartney Transvaginal Tube. *Am Assoc Gynecol Laparosc* 9(4):536-540, 2002.
4. Manolitas et al. Total Laparoscopic Hysterectomy in the Management of Endometrial Carcinoma. *J Am Assoc Gynecol Laparosc* 9(1):54-62, 2002.
5. Mourtis et al. Safety of laparoscopy versus laparotomy in early-stage endometrial cancer: a randomised trial. *Lancet Oncol* 2010; 11: 763-71.
6. McCartney et al. Total Laparoscopic Hysterectomy with a Transvaginal Tube. *Am Assoc Gynecol Laparosc* 2004, 11(1):79-82.
7. Obermaier et al. Feasibility and Safety of Total Laparoscopic Radical Hysterectomy. *J Am Assoc Gynecol Laparosc* 10(3):345-349, 2003.
8. Working group of ESGE and SERGS. The role of minimally invasive radical hysterectomy for cervical cancer: ESGE-SERGS position document and joint-statement. *Facts Views Vis Obgyn*, 2020, 12 (1): 13-19.

Ordering Information:

Product code	Description	UOM
35-TV	LiNA McCartney Tube™ - 35mm diameter, sterile, single use	Box of 5 ea
45-TV	LiNA McCartney Tube™ - 45mm diameter, sterile, single use	Box of 5 ea



© 2021 LiNA Medical ApS. All rights reserved.

Distributor:

Quality Management System
EN ISO13485:2016

 MANUFACTURER: The OR Company Pty Ltd 1/32 Silwood Rise Carrum Downs VIC 3201 Australia
 OBELIS S.A., BD GENERAL WAHIS 53, B-1030 BRUSSELS, BELGIUM, MAIL@OBELIS.NET
■ Exclusive Distributor for Designated Countries: LiNA Medical International Operations AG, Platz 3, 6038 Root D4, Switzerland.

