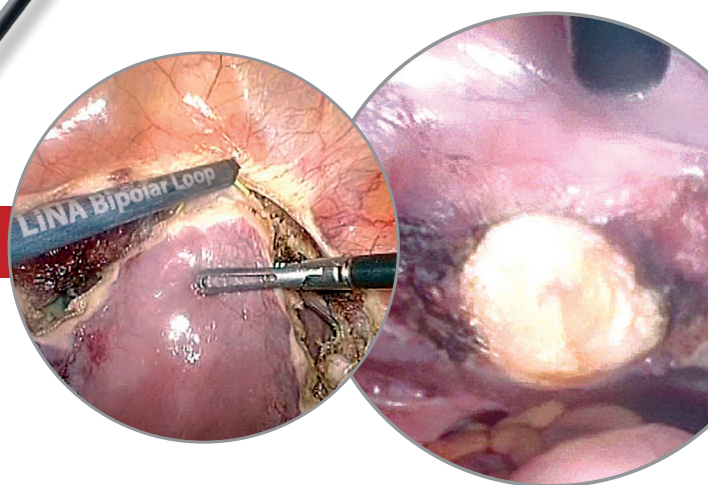


# LiNA Bipolar Loop™

*Laparoscopic Supracervical Hysterectomy (LSH)  
and subserosal pedunculated myomectomy*

Amputation in a few seconds





# LiNA Bipolar Loop™

*Laparoscopic Supracervical Hysterectomy (LSH)  
and subserosal pedunculated myomectomy*

## Safety. Low energy, high effect.

Bipolar technology offers immediate cutting action and improved safety with only 55-70 watts of energy. No grounding pad needed.

Visualization is aided by a protective ceramic tip, allowing for optimum accuracy in loop positioning.

The protective ceramic tip in conjunction with the gold insulation isolates the cutting action to the tissue between the two electrodes for improved safety.

## Fast. Clean cut in seconds.

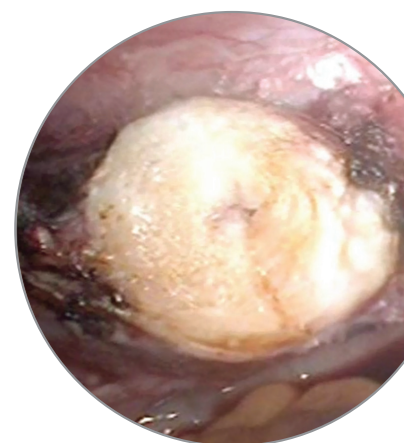
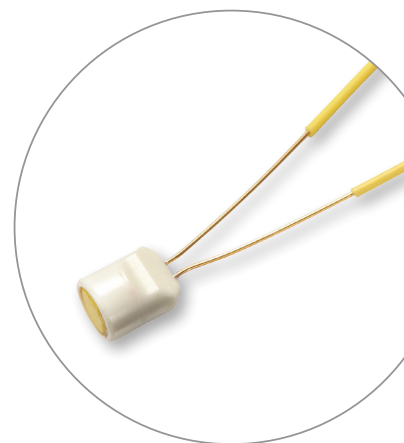
Reduce your cervix amputation time by at least several minutes.

Cut and coagulation in one step leaves a clean hemostatic surface, which reduces the need for further coagulation of the cervical stump or peduncle.

## Simple. No special generator required.

LiNA Bipolar Loop™ is compatible with standard electrosurgical units to assure quick and easy setup.

3 meter cable with standard 2-pin 4mm male bipolar plug or EURO connector.



### Ordering Information:

LiNA Bipolar Loop™ **CE**  
0459

Product code	Description	UOM
BL-160	<b>LiNA Bipolar Loop™</b> – Endoscopic Bipolar Loop for LSH & Myomectomy. Small Loop - 160mm x 80mm. 2-pin plug. Sterile, single use.	Box of 6 ea
BL-200	<b>LiNA Bipolar Loop™</b> – Endoscopic Bipolar Loop for LSH & Myomectomy. Large Loop - 200mm x 100mm. 2-pin plug. Sterile, single use.	Box of 6 ea
BL-240	<b>LiNA Bipolar Loop™</b> – Endoscopic Bipolar Loop for LSH & Myomectomy. X-Large Loop - 240mm x 120mm. 2-pin plug. Sterile, single use.	Box of 6 ea
BL-160-E	<b>LiNA Bipolar Loop™</b> – Endoscopic Bipolar Loop for LSH & Myomectomy. Small Loop - 160mm x 80mm. EURO connector. Sterile, single use.	Box of 6 ea
BL-200-E	<b>LiNA Bipolar Loop™</b> – Endoscopic Bipolar Loop for LSH & Myomectomy. Large Loop - 200mm x 100mm. EURO connector. Sterile, single use.	Box of 6 ea
BL-240-E	<b>LiNA Bipolar Loop™</b> – Endoscopic Bipolar Loop for LSH & Myomectomy. X-Large Loop - 240mm x 120mm. EURO connector. Sterile, single use.	Box of 6 ea

©2020 LiNA Medical ApS. All rights reserved.

LiNA is a registered trademark of LiNA Medical in EU, US and CN.

LiNA Medical ApS

• Formervangen 5  
DK-2600 Glostrup  
Denmark

• Tel.: +45 43 29 66 66  
Fax: +45 43 29 66 99  
info@lina-medical.com

• www.lina-medical.com  
CVR: 10054974

EN ISO 13485:2016  
Quality Management System

