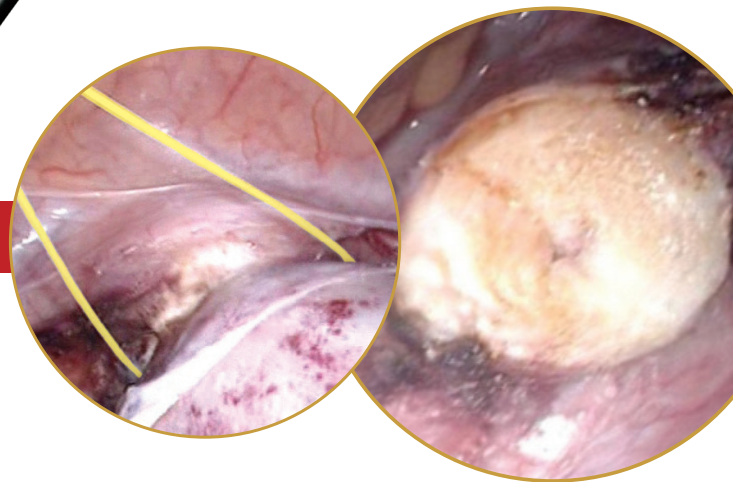


LiNA **Gold Loop**™

*Laparoscopic Supracervical Hysterectomy (LSH)
and subserosal pedunculated myomectomy*

Amputation in a few seconds



Innovation in Gynecology

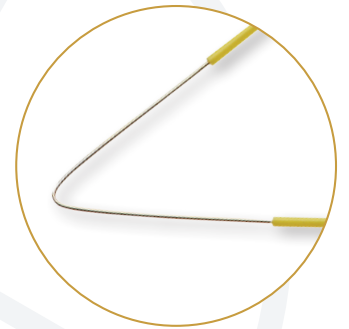
LiNA Gold Loop™

Laparoscopic Supracervical Hysterectomy (LSH)
and subserosal pedunculated myomectomy

Efficiency. Minimize procedure time by at least several minutes.

The LiNA Gold Loop™ is a safe and effective monopolar loop for sectioning of the uterus during laparoscopic supracervical hysterectomy (LSH) and removal of subserosal pedunculated myomas.

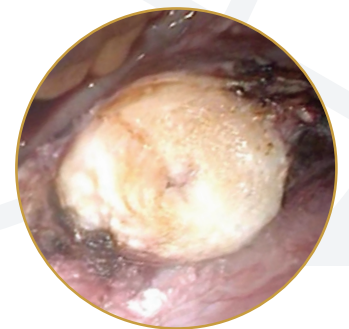
Cut and coagulate in one single step. Minimize the necessity for post coagulation of the surface by utilizing a blend mode (the recommended setting for the generator is: 100-130 W, Blend 1).



Versatility. 3 sizes available and no special generator required.

The LiNA Gold Loop™ is compatible with standard electro-surgical units to assure quick and easy setup.

3 meter cable with 3-pin monopolar plug or 8 mm connector.



Safety. Precise sectioning of the uterus.

Gold insulation on the loop improves visibility on the monitor.

Provides a clean and coagulated surface.



Ordering Information:

Product code	Description	UOM
EL-160-4	LiNA Gold Loop™ – Endoscopic Monopolar Loop for LSH & Myomectomy. Small Loop - 160 mm x 80 mm, 3-pin plug. Sterile, single use	Box of 6 ea
EL-160-8	LiNA Gold Loop™ – Endoscopic Monopolar Loop for LSH & Myomectomy. Small Loop - 160 mm x 80 mm, 8 mm connector. Sterile, single use	Box of 6 ea
EL-200-4	LiNA Gold Loop™ – Endoscopic Monopolar Loop for LSH & Myomectomy. Large Loop - 200 mm x 100 mm, 3-pin plug. Sterile, single use.	Box of 6 ea
EL-200-8	LiNA Gold Loop™ – Endoscopic Monopolar Loop for LSH & Myomectomy. Large Loop - 200 mm x 100 mm, 8 mm connector. Sterile, single use.	Box of 6 ea
EL-240-4	LiNA Gold Loop™ – Endoscopic Monopolar Loop for LSH & Myomectomy. X-Large Loop - 240 mm x 120 mm, 3-pin plug. Sterile, single use.	Box of 6 ea
EL-240-8	LiNA Gold Loop™ – Endoscopic Monopolar Loop for LSH & Myomectomy. X-Large Loop - 240 mm x 120 mm, 8 mm connector. Sterile, single use.	Box of 6 ea

Distributor:

©2021 LiNA Medical ApS. All rights reserved.

LiNA is a registered trademark of LiNA Medical in EU, US and CN.

LiNA Medical ApS

• Formervangen 5
DK-2600 Glostrup
Denmark

• Tel.: +45 43 29 66 66
Fax: +45 43 29 66 99
info@lina-medical.com

• www.lina-medical.com
CVR: 10054974

EN ISO 13485:2016
Quality Management
System

