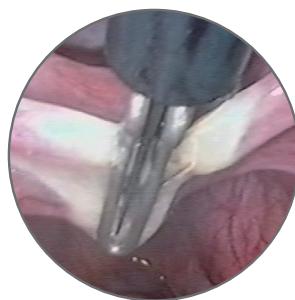
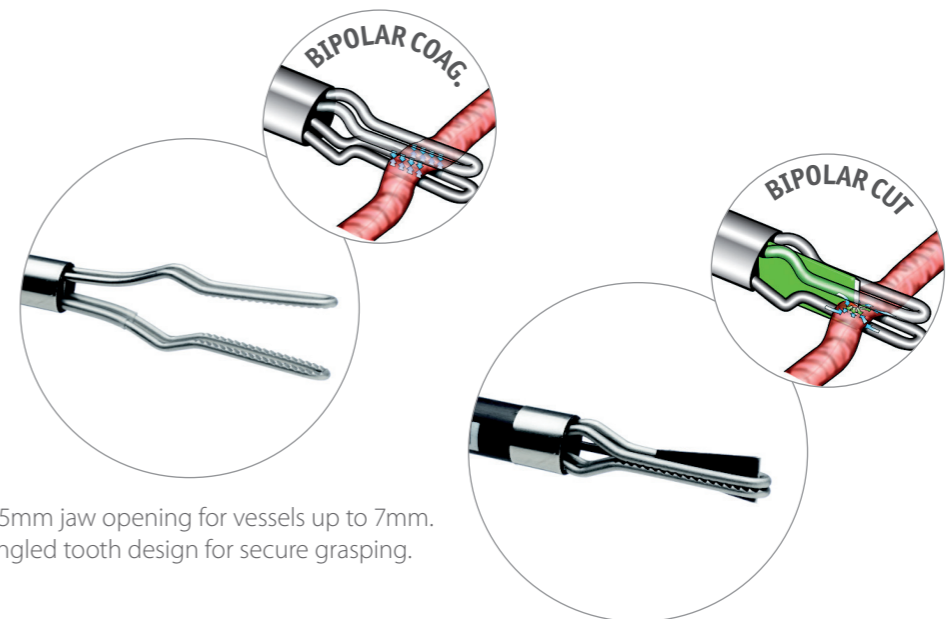


LiNA PowerBlade™

Single use multifunctional forceps for bipolar coagulation and cutting



LiNA PowerBlade™



8.5mm jaw opening for vessels up to 7mm.
Angled tooth design for secure grasping.

Cutting electrode/blade for bipolar cut.

Versatility. LiNA PowerBlade™ can be used together with all standard bipolar electrosurgical units. No capital equipment investment is required to use the LiNA PowerBlade™.

Wide range of functions

LiNA PowerBlade™ is a bipolar coagulating and cutting forceps for improved techniques in laparoscopic procedures. As an all in one instrument, the LiNA PowerBlade™ is ideal for many complex and time consuming procedures:

- Grasping
- Dissecting
- Coagulating
- Cutting

Functionality. A clean and precise cut

The bipolar electrode/blade never goes dull

The patented design allows for bipolar transection of the tissue. Cutting is achieved through bipolar energy, **not mechanical** action of a knife blade.

For use with all standard bipolar electrosurgical units.

Broad range of size, length and jaw geometry.

Safety. Unique bipolar power blade cutting function

Advancing the cutting electrode for transection, the bipolar current is automatically switched from the jaws.

Electrosurgical current passes through the tissue between the cutting electrode/blade and the jaws.

Bipolar electrosurgical cut with coagulation along surface of cutting electrode/blade ensures a reduction in bleeding compared to a conventional knife blade instrument.



5mm and 10mm - Straight jaws



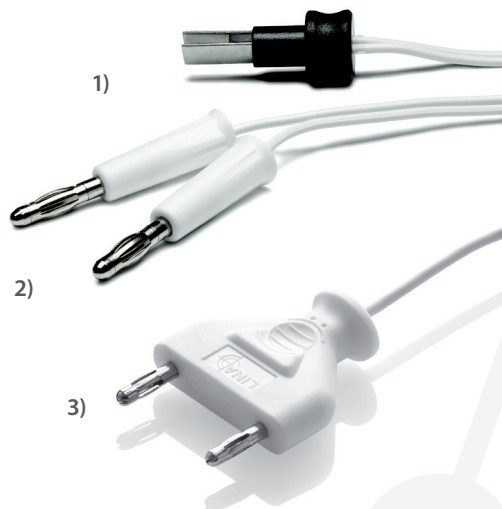
5mm - Curved jaws



LiNA PowerBlade™

Available with three different connectors:

- 1) EURO connector
- 2) 2 x 4mm pins (banana plug)
- 3) 2 x 4mm pins fixed 29 mm distance



Ordering information:

LiNA PowerBlade™

CE
0459

Product Code	LiNA PowerBlade™ - Single use only - Single packed - Sterile	UOM
5005-E	Bipolar cutting & coagulation forceps, straight jaws, Ø 5,4mm, 330 mm working length, 3m cable, EURO connector	Box of 5
5005-E-160	Bipolar cutting & coagulation forceps, straight jaws, Ø 5,4mm, 185 mm working length, 3m cable, EURO connector	Box of 5
5005-E-420	Bipolar cutting & coagulation forceps, straight jaws, Ø 5,4mm, 445 mm working length, 3m cable, EURO connector	Box of 5
5010-E	Bipolar cutting & coagulation forceps, straight jaws, Ø 10mm, 330 mm working length, 3m cable, EURO connector	Box of 5
5010-E-160	Bipolar cutting & coagulation forceps, straight jaws, Ø 10mm, 185 mm working length, 3m cable, EURO connector	Box of 5
5005-E-C	Bipolar cutting & coagulation forceps, curved jaws, Ø 5,4mm, 330 mm working length, 3m cable, EURO connector	Box of 5
5005-E-C-160	Bipolar cutting & coagulation forceps, curved jaws, Ø 5,4mm, 185 mm working length, 3m cable, EURO connector	Box of 5
5005-E-C-420	Bipolar cutting & coagulation forceps, curved jaws, Ø 5,4mm, 445 mm working length, 3m cable, EURO connector	Box of 5
5005	Bipolar cutting & coagulation forceps, straight jaws, Ø 5,4mm, 330 mm working length, 3m cable, 2 x 4mm pins	Box of 5
5005-160	Bipolar cutting & coagulation forceps, straight jaws, Ø 5,4mm, 185 mm working length, 3m cable, 2 x 4mm pins	Box of 5
5005-420	Bipolar cutting & coagulation forceps, straight jaws, Ø 5,4mm, 445 mm working length, 3m cable, 2 x 4mm pins	Box of 5
5010	Bipolar cutting & coagulation forceps, straight jaws, Ø 10mm, 330 mm working length, 3m cable, 2 x 4mm pins	Box of 5
5010-160	Bipolar cutting & coagulation forceps, straight jaws, Ø 10mm, 185 mm working length, 3m cable, 2 x 4mm pins	Box of 5
5005-C	Bipolar cutting & coagulation forceps, curved jaws, Ø 5,4mm, 330 mm working length, 3m cable, 2 x 4mm pins	Box of 5
5005-C-160	Bipolar cutting & coagulation forceps, curved jaws, Ø 5,4mm, 185 mm working length, 3m cable, 2 x 4mm pins	Box of 5
5005-C-420	Bipolar cutting & coagulation forceps, curved jaws, Ø 5,4mm, 445 mm working length, 3m cable, 2 x 4mm pins	Box of 5
5005-Y	Bipolar cutting & coagulation forceps, straight jaws, Ø 5,4mm, 330 mm working length, 3m cable, 2 x 4mm pins fixed 29mm distance	Box of 5
5005-Y-160	Bipolar cutting & coagulation forceps, straight jaws, Ø 5,4mm, 185 mm working length, 3m cable, 2 x 4mm pins fixed 29mm distance	Box of 5
5005-Y-420	Bipolar cutting & coagulation forceps, straight jaws, Ø 5,4mm, 445 mm working length, 3m cable, 2 x 4mm pins fixed 29mm distance	Box of 5
5010-Y	Bipolar cutting & coagulation forceps, straight jaws, Ø 10mm, 330 mm working length, 3m cable, 2 x 4mm pins fixed 29mm distance	Box of 5
5010-Y-160	Bipolar cutting & coagulation forceps, straight jaws, Ø 10mm, 185 mm working length, 3m cable, 2 x 4mm pins fixed 29mm distance	Box of 5
5005-Y-C	Bipolar cutting & coagulation forceps, curved jaws, Ø 5,4mm, 330 mm working length, 3m cable, 2 x 4mm pins fixed 29mm distance	Box of 5
5005-Y-C-160	Bipolar cutting & coagulation forceps, curved jaws, Ø 5,4mm, 185 mm working length, 3m cable, 2 x 4mm pins fixed 29mm distance	Box of 5
5005-Y-C-420	Bipolar cutting & coagulation forceps, curved jaws, Ø 5,4mm, 445 mm working length, 3m cable, 2 x 4mm pins fixed 29mm distance	Box of 5

©2021 LiNA Medical ApS. All rights reserved.

LiNA is a registered trademark of LiNA Medical in EU, US and CN.

LiNA Medical ApS

• Formervangen 5
DK-2600 Glostrup
Denmark

• Tel.: +45 43 29 66 66
Fax: +45 43 29 66 99
info@lina-medical.
com

• www.lina-medical.
com
CVR: 10054974

EN ISO 13485:2016
Quality Management
System

