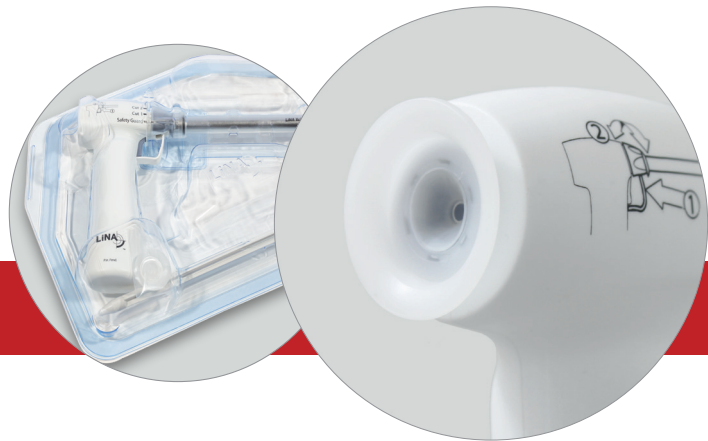


# LiNA Xcise™

*Cordless Laparoscopic Morcellator*



*Cut the Cord*



Innovation in Gynecology

# LiNA Xcise™

Cordless Laparoscopic Morcellator



## Simplicity. Instant-use fully disposable design.

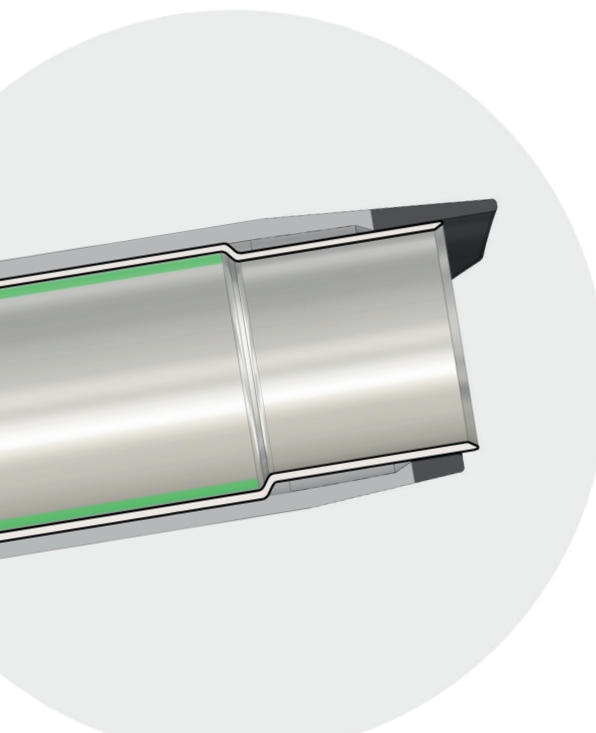
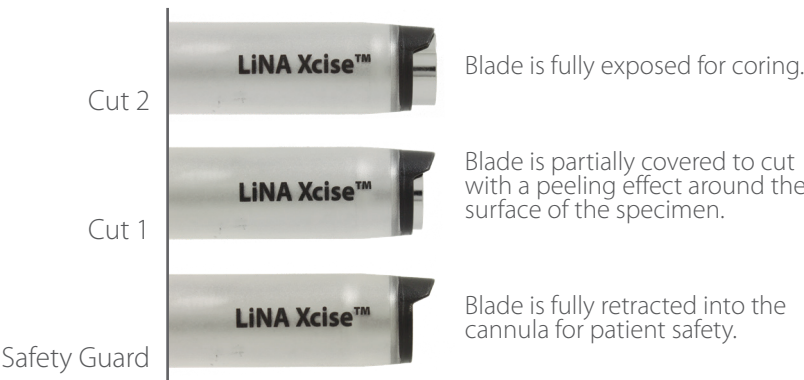
No assembly required. No drive box or cables.

Lightweight cordless design incorporates motor and battery in one device. Open the package, insert the obturator, and you are ready to start morcellating.



## Safety. Control your blade exposure.

LiNA Xcise™ features 3 blade positions to choose from to aid in safety and control during tissue morcellation.



## Speed. Flared Tube Technology™

Cutting tube diameter increases as tissue is pulled through, creating a gap (highlighted in green at left) which reduces drag between the blade and the tissue. Drag is reduced, facilitating longer strips with less tissue breakage.

High torque ~1000 RPM motor to power through tissue.

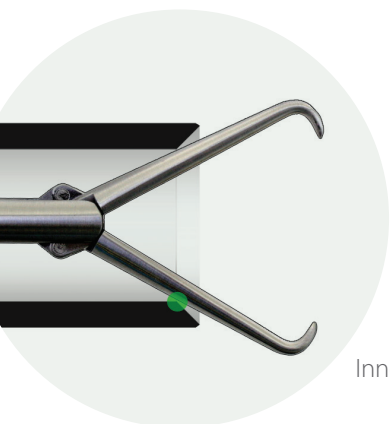


Snap-on  
5mm Reducer Cap

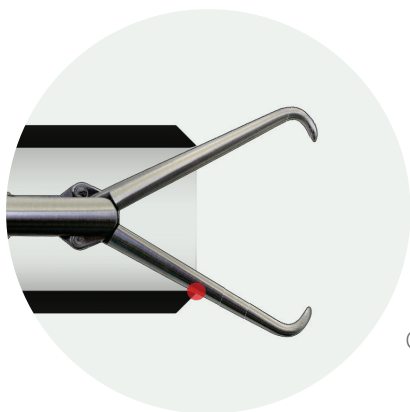


# LiNA Xcise™

Cordless Laparoscopic Morcellator



Inner Bevel - LiNA Xcise™



Outer Bevel

**Sharpness.** 300 series stainless steel blade features a larger inner bevel to prevent dulling from inadvertent contact with the tenaculum.

#### Indications for use:

Indicated for cutting, coring, and extracting tissue in operative laparoscopy, including gynecologic procedures such as hysterectomy and myomectomy. For more information please refer to the Instructions for use.

#### Ordering information:

LiNA Xcise™ **CE**  
0459

Product code	Description	UOM
MOR-1515-1-I	LiNA Xcise™ – Laparoscopic Morcellator 15mm, battery powered morcellator system with obturator. Sterile, single use.	Box of 12 ea (individually packed)
MOR-1515-6-I	LiNA Xcise™ – Laparoscopic Morcellator 15mm, battery powered morcellator system with obturator. Sterile, single use.	Box of 6 ea

#### Distributor:

©2020 LiNA Medical ApS. All rights reserved.

LiNA is a registered trademark of LiNA Medical in EU, US and CN.

LiNA Medical ApS

• Formervangen 5  
DK-2600 Glostrup  
Denmark

• Tel.: +45 43 29 66 66  
Fax: +45 43 29 66 99  
info@lina-medical.com

• www.lina-medical.com  
CVR: 10054974

EN ISO 13485:2016  
Quality Management  
System

