

KEBOMED



MiniONE/Mini Classic Button

Attaching an extension set,
giving medicine and tube
maintenance

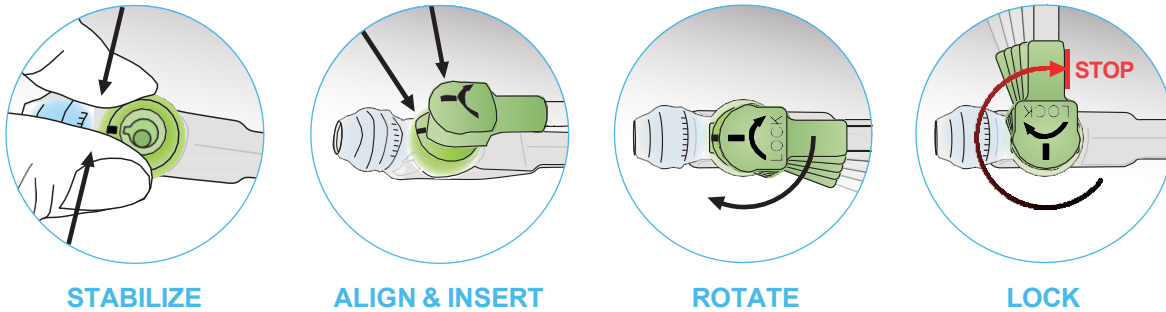


Attaching A Feed Set To The MiniONE® / Mini Classic Balloon Button

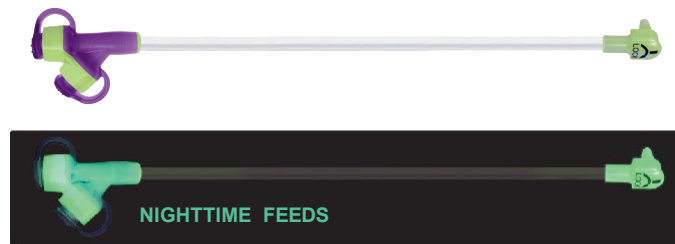
Always wash your hands with soap and water. Rinse and dry them well.

Refer to the MiniONE® /Mini Classic Balloon Button Directions for Use for full instructions.

To attach a feed set to your Button, line up the black line on the feed set connector with the black line on the button's feeding port. Press the feed set connector into the feeding port. Turn 3/4 to the right (clockwise) to lock the feeding set in place.



Nighttime feeds are simplified with the MiniONE® Button. The AMT MiniONE® Button, and its corresponding feed sets, feature our patented Glow Green™ Technology. Glow Green™ Technology facilitates easier nighttime connections by illuminating the feed port and the feed set connector. This is not the case for the Mini Classic Button.

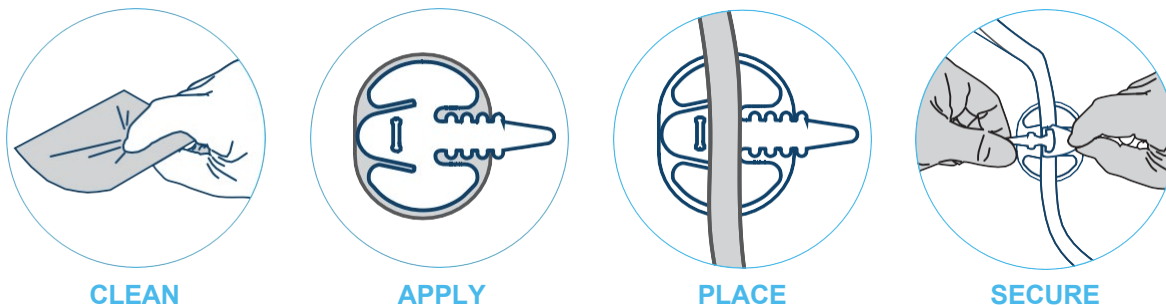


Routine maintenance is recommended for MiniONE® /Mini Classic feed sets.

- The feed set should be removed when not in use.
- The feed set should be cleansed with mild soap and warm water after each use.
 - Be sure to rinse thoroughly to remove any formula or soap residual.
- For continuous feeding, the feed set should be cleaned at least once per day.
- To help prevent clogging: flush the feed set after feeding, flush the feed set after administering medication(s), and follow proper flushing guidelines as recommended in the MiniONE® /Mini Classic Balloon Button Directions for Use (DFU).

CINCH® Tube Securement Device

While feeding, you can secure the feed set to the belly with an AMT CINCH®. This will help keep the feed set in place and prevent excessive movement and tension on the Balloon Button and around the stoma site.



Giving Medicine Into The MiniONE® / Mini Classic Balloon Button

Always check and see if you have received the correct form of medication. Medications can be given through the Balloon Button in liquid form. If a prescribed medication is only available as a tablet or capsule, check with a pharmacist or doctor to see if it is safe to crush the medicine. If safe, medication should be crushed as fine as possible (into powder form) and dissolved in water before administering through the device.

Warning: NEVER crush enteric coated medications and NEVER mix medications with feeding formula, unless directed by your physician.

Medications should be given through the med-port of your y-port extension set (if you are unsure which port is the med-port, please note that the med-port is smaller than the feed port and labeled as "MED"). Flush with water after giving medications (3-10 ml for children, 10-50 ml for adults, or with an amount recommended by your healthcare provider).

To more easily administer medications, AMT offers a 2" bolus medication set with straight connector (order# 8-0211) as well as a 2" y-port medication set with straight connector (order# 8-0212).

Medicine may also be administered directly into the MiniONE® Glow Green™ feeding port (interlock) using the slip tip syringe that comes in the G-Tube kit.

- Mix the medicine with a little water and draw back the mixture into the slip tip syringe (only do this if your doctor/pharmacist has told you it is safe to mix the medicine with water).
- Put the syringe directly into the MiniONE® Glow Green™ feeding port (interlock).
- When you are done giving the medication, flush the port with water (3-10 ml for children, 10-50 ml for adults, or amount recommended by your healthcare provider).

Maintenance:

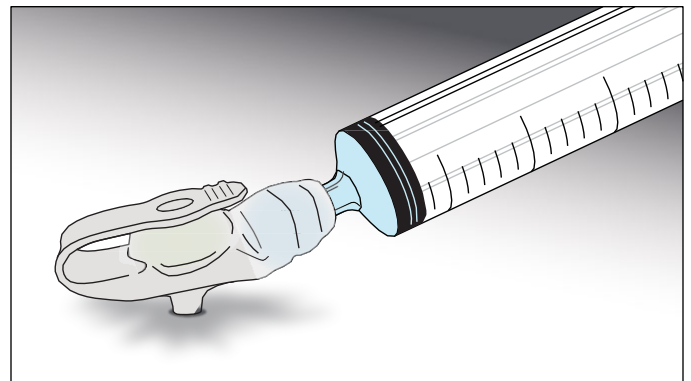
Routine maintenance includes tasks such as checking the balloon volume, stoma site care, device replacement, and more!

Checking the Balloon Volume

Check the balloon fill volume as recommended by your physician.

Remove all water from the balloon by inserting a small syringe into the balloon fill port and drawing back on the plunger (5 ml syringe for 12F-14F devices, 10 ml syringe for 16F-24F devices). The balloon fill port on 12-14F MiniONE® Balloon Buttons is compatible with both Luer (slip tip) and Luer lock syringes; the balloon fill port on 16-24F devices is compatible with a slip tip syringe.

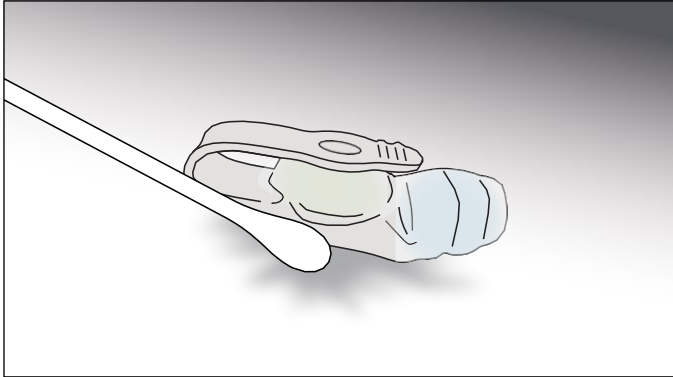
- If the water volume is at the prescribed amount: push the plunger to return the water into the balloon; disconnect the syringe.
- If the water volume is less than the prescribed amount or if the water appears dirty: discard the water that was removed from the device. Draw the prescribed amount of water into the syringe from a container of fresh water. Reconnect the syringe to the balloon fill port and push the plunger to refill the balloon with water.



Balloon Button Fill Volume Table			
Fr.	Min.	Rec.	Max
12F	2 ml	2.5 ml	3 ml
14F	3 ml	4 ml	5 ml
16F	4 ml	6 ml	8 ml
18F	6 ml	8 ml	10 ml
20F	7 ml	10 ml	15 ml
24F	7 ml	10 ml	15 ml

Stoma Site, General Care

Cleaning: The stoma site should be kept clean and dry at all times. It is important to clean the stoma site every day. A cotton swab or terry cloth can be used to clean the skin around the G-Tube with mild soap and water. Clean the stoma as directed by a healthcare provider.



- After Cleaning: allow the stoma site to air dry.
- Always check the stoma site for redness, pain/soreness, swelling, or any drainage. If these symptoms are observed, contact a healthcare provider.
- It is not necessary to use gauze or pads at the stoma site. If there is leaking, the G-Tube may be too loose or too tight.

Circulation: Once the stoma site is fully healed, turn/rotate the MiniONE® / Mini Classic every day, stopping at a different position each time. Rotating the external bolster of the MiniONE® / Mini Classic promotes a healthy stoma by allowing air to get to the skin.

Bath Time: Patients fitted with a G-Tube are allowed to bathe and swim. Be sure to close the safety plug before submerging the device in water. Bath time is a good opportunity for regular cleaning of the G-Tube and stoma site.

•

WHEN TO CALL A HEALTHCARE PROFESSIONAL

Call your HCP if any of the following are observed:

- Fever, vomiting, or diarrhea
- Skin around the stoma site is red, discolored, or raw
- Drainage around the stoma site is white, yellow, or green
- Drainage around the stoma site is discolored and has an unpleasant odor
- Crusting at the stoma site
- Large amount of tissue build up, such as granulation tissue
Swollen skin or tissue at the stoma site
- Repetitive leakage of food, or gastric contents
- Leakage, the device may be too loose or too tight (stoma length may need to be re-measured)
- Possible tube migration:
 - Low profile device: External bolster is no longer flush against the skin. Look for either a distinct indentation at the stoma site or a distinct gap between the device and skin.
- The G-tube falls out and you are unable to replace it easily
- Pain at the stoma site
- Bleeding, pus, or inflammation at the stoma site
- Distended stomach, a possible indication of gastric or intestinal blockage

For a complete list of products, visit us at <https://www.kebomed.co.uk/products/>
amt-enteral-devices/

01884 266377 | enteral.sales@kebomed.co.uk

KEBOMED

KeBomed UK
Unit 7, Kingsford Rural Business Centre
Kewstons
Cullompton EX15 2AU

patents: <http://www.appliedmedical.net/patents/> | trademarks: http://www.appliedmedical.net/trademarks/salem_sump/ is a registered trademark of cardinal health ireland unlimited company.



KEBOMED