

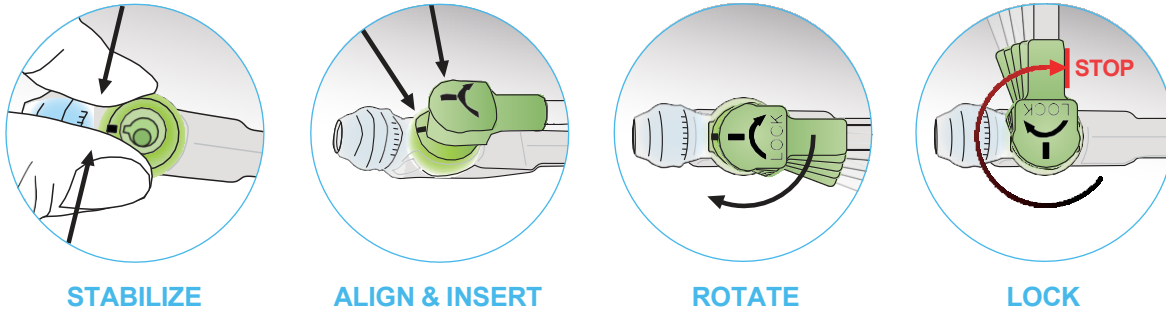
MiniONE/Mini Classic Button Attaching an AMT extension set

Attaching A Feed Set To The MiniONE® / Mini Classic Balloon Button

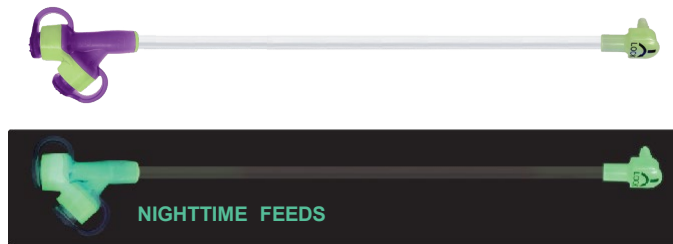
Always wash your hands with soap and water. Rinse and dry them well.

Refer to the MiniONE® /Mini Classic Balloon Button Directions for Use for full instructions.

To attach an AMT feed set to your Button, line up the black line on the feed set connector with the black line on the button's feeding port. Press the feed set connector into the feeding port. Turn 3/4 to the right (clockwise) to lock the feeding set in place.



Nighttime feeds are simplified with the MiniONE® Button. The AMT MiniONE® Button, and its corresponding feed sets, feature our patented Glow Green™ Technology. Glow Green™ Technology facilitates easier nighttime connections by illuminating the feed port and the feed set connector. This is not the case for the Mini Classic Button.



Routine maintenance is recommended for MiniONE® /Mini Classic feed sets.

- The feed set should be removed when not in use.
- The feed set should be cleansed with mild soap and warm water after each use.
- For continuous feeding, the feed set should be cleaned at least once per day.
- To help prevent clogging: flush the feed set after feeding, flush the feed set after administering medication(s), and follow proper flushing guidelines as recommended in the MiniONE® /Mini Classic Balloon Button Directions for Use (DFU).

CINCH® Tube Securement Device

While feeding, you can secure the feed set to the belly with an AMT CINCH®. This will help keep the feed set in place and prevent excessive movement and tension on the Balloon Button and around the stoma site.

