

Why Use a MiniACE

(Antegrade Contenance Enema)

When a patient is suffering from constipation or faecal incontinence, his/her doctor will typically recommend lifestyle changes such as a diet that is high in fibre and/or the regular use of laxatives (taken orally or as a suppository). Another treatment option is an enema. The type of enema that most people are familiar with is a retrograde enema; this means the irrigation fluid is administered from the “bottom up”

For patients with severe constipation or incontinence, dietary changes and retrograde enemas may not be sufficient. These patients may need what is known as an Antegrade Contenance Enema (ACE): Antegrade (ante = before), Contenance (self-control), Enema (infusion of fluid).

During the ACE, irrigation fluid is administered into the beginning of the large intestine and allowed to flush from the “top down”. ACE is typically recommended for patients who have not responded to conservative treatments but are in need of a solution.

A cecostomy tube, or C-Tube, (like the MiniACE) is a thin tube that is placed into the large bowel through a stoma in the abdomen. The MiniACE® can be placed either directly into the caecum (cecostomy) or through the appendix and into the large intestine (appendicostomy, MACE). Once the stoma site is properly healed, irrigation fluid is delivered into the cecum through the MiniACE®. This process, known as an Antegrade Contenance Enema (ACE), helps move stools out of the body through the rectum.

The MiniACE® is a low-profile device. The phrase “low profile” refers to the external portion of the device, often called the bolster, being very flat or flush against the skin.



There are two types of ACE procedures: caecostomy and appendicostomy

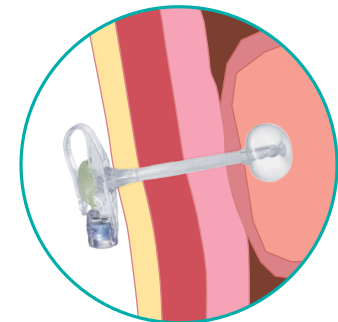
Caecostomy: A doctor will create a stoma (or opening) in the lower- right section of the abdomen, from the abdominal wall to the first part of the large intestine (known as the caecum). A tube, such as the MiniACE®, will be placed in the stoma. Once the stoma site is properly healed, irrigation fluid is delivered into the cecum through the C-Tube. This process, known as an Antegrade Enema, helps move stools out of the body through the rectum.

Appendicostomy (Malone, MACE): Instead of creating a stoma in the lower-right section of the abdomen (as is done with the cecostomy procedure, above), the doctor will typically create a stoma opening at the umbilicus where it can be well hidden. The doctor will then connect the appendix to the stoma/opening in the belly button.

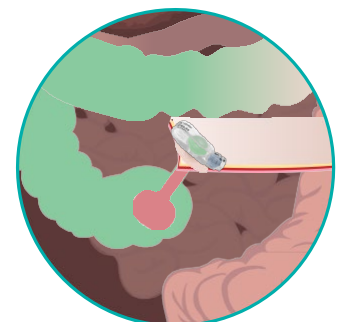
By connecting the appendix to the stoma in the belly button, the doctor creates a channel from the outside of the body to the first part of the large intestine, known as the caecum.

Once the stoma site is properly healed, irrigation fluid is delivered into the caecum. Typically, MACE patients do not need to keep a tube, such as MiniACE, in their stoma.

Instead, these patients insert a catheter into the stoma at the time of the flush and remove it when the flush/ enema is complete. However, sometimes the stoma can begin to close or sometimes patients do not like the sensation of inserting a catheter every time they want to administer an antegrade enema; in these instances, a device like the MiniACE® can be inserted into the stoma tract.



Caecostomy



Appendicostomy

Figure 1: Illustration comparing the MiniACE® being used for Cecostomy and Appendicostomy, respectively.

What are the benefits of the AMT MiniACE

An Adjustable Balloon

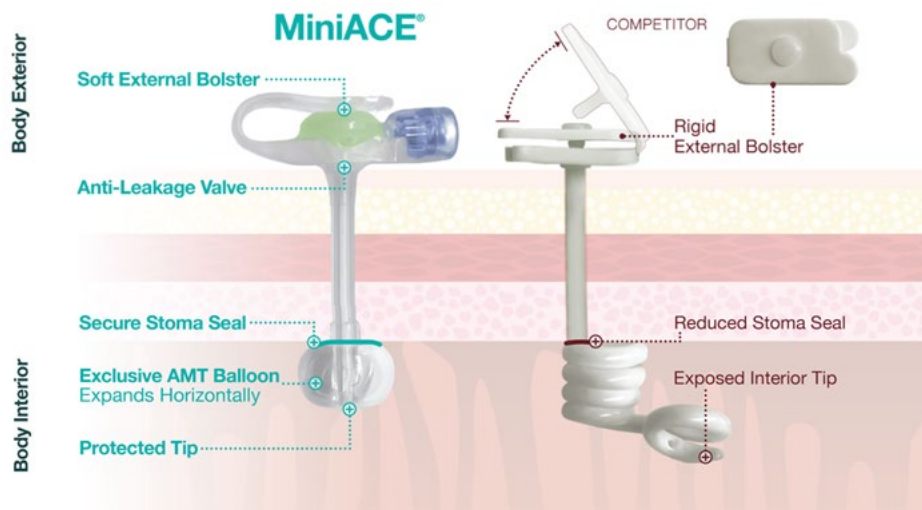
- Balloon fill volume can be easily adjusted for a custom-fit, as recommended by your healthcare provider. A better fit can improve patient comfort and reduce leaks.

A Durable Balloon

- Made from medical-grade silicone, which can increase the longevity of the MiniACE®

A Better Balloon

- Exclusive AMT Balloon with unique “apple-shape”, is designed to cover more surface area, take up less space in the colon, and minimize leaks at the cecostomy site. When filled, the AMT balloon grows horizontally to provide a larger seal surface and may help to reduce granulation tissue.



Safe and Secure: Irrigation Set Attachment

- AMT's MiniACE® Irrigation Set locks into place with a simple turn! The connection between the MiniACE® Button and its irrigation set is 10x stronger than the competition



For a complete list of products, visit us at <https://www.kebomed.co.uk/products/>
amt-enteral-devices/
01884 266377 | enteral.sales@kebomed.co.uk

KeBomed UK
Swaines Hill Manor
Estate offices, Swaines Hill,
Alton, GU34 4DP

KEBOMED